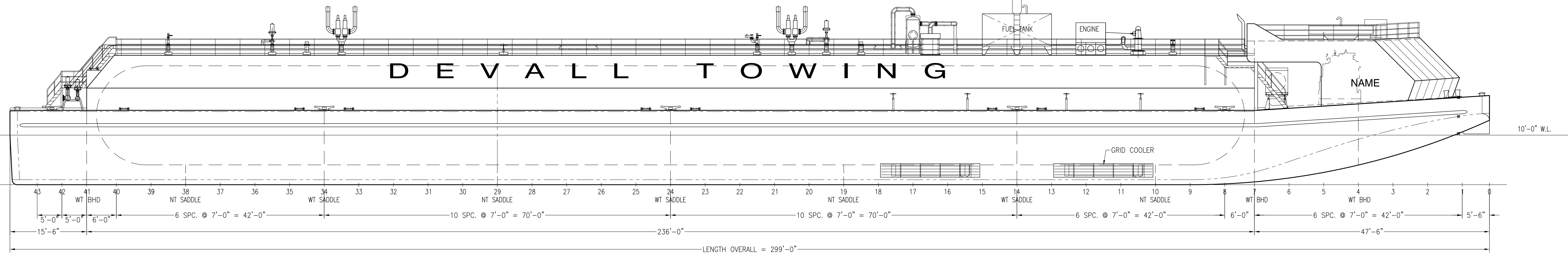
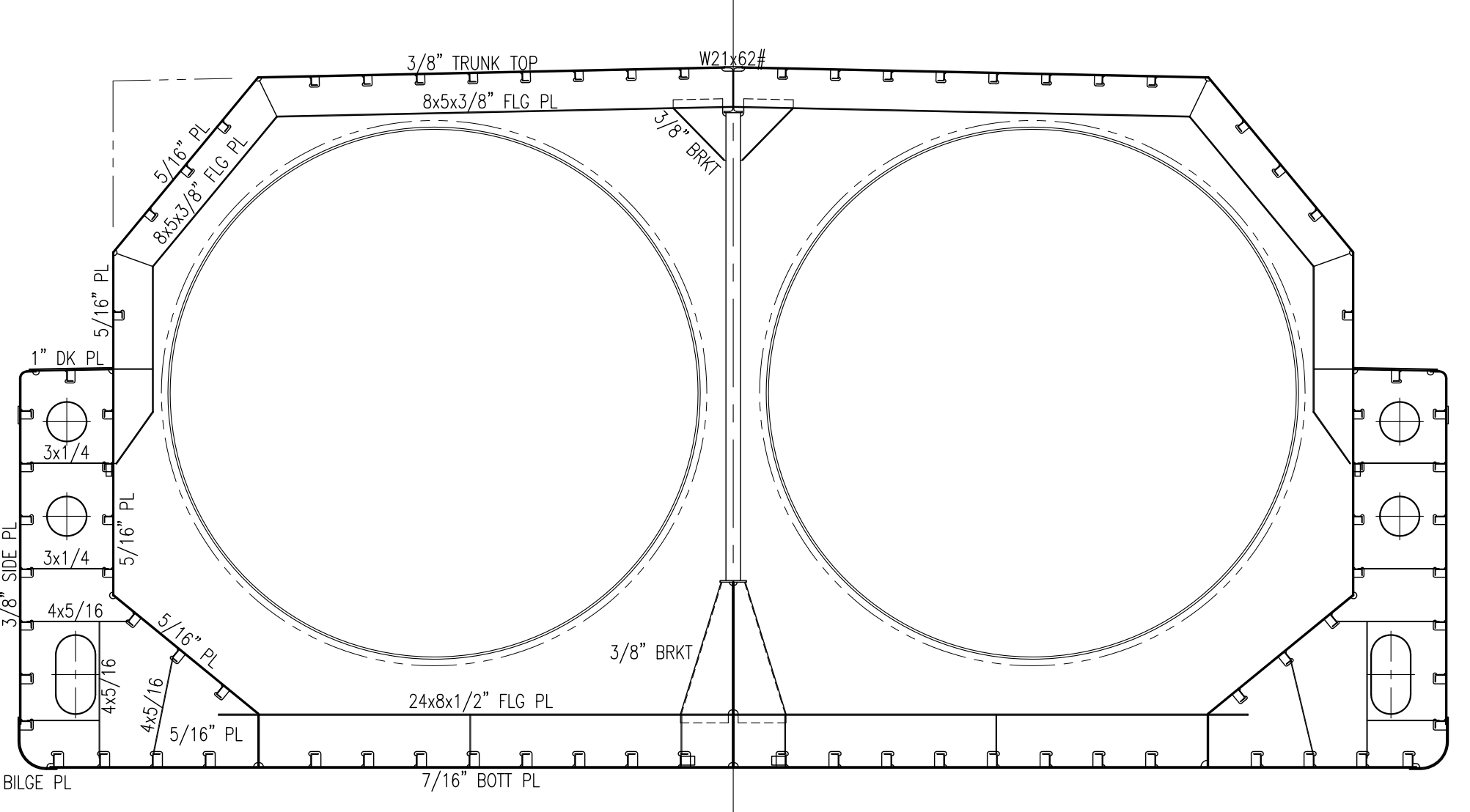


PLAN
3/32" = 1'-0"

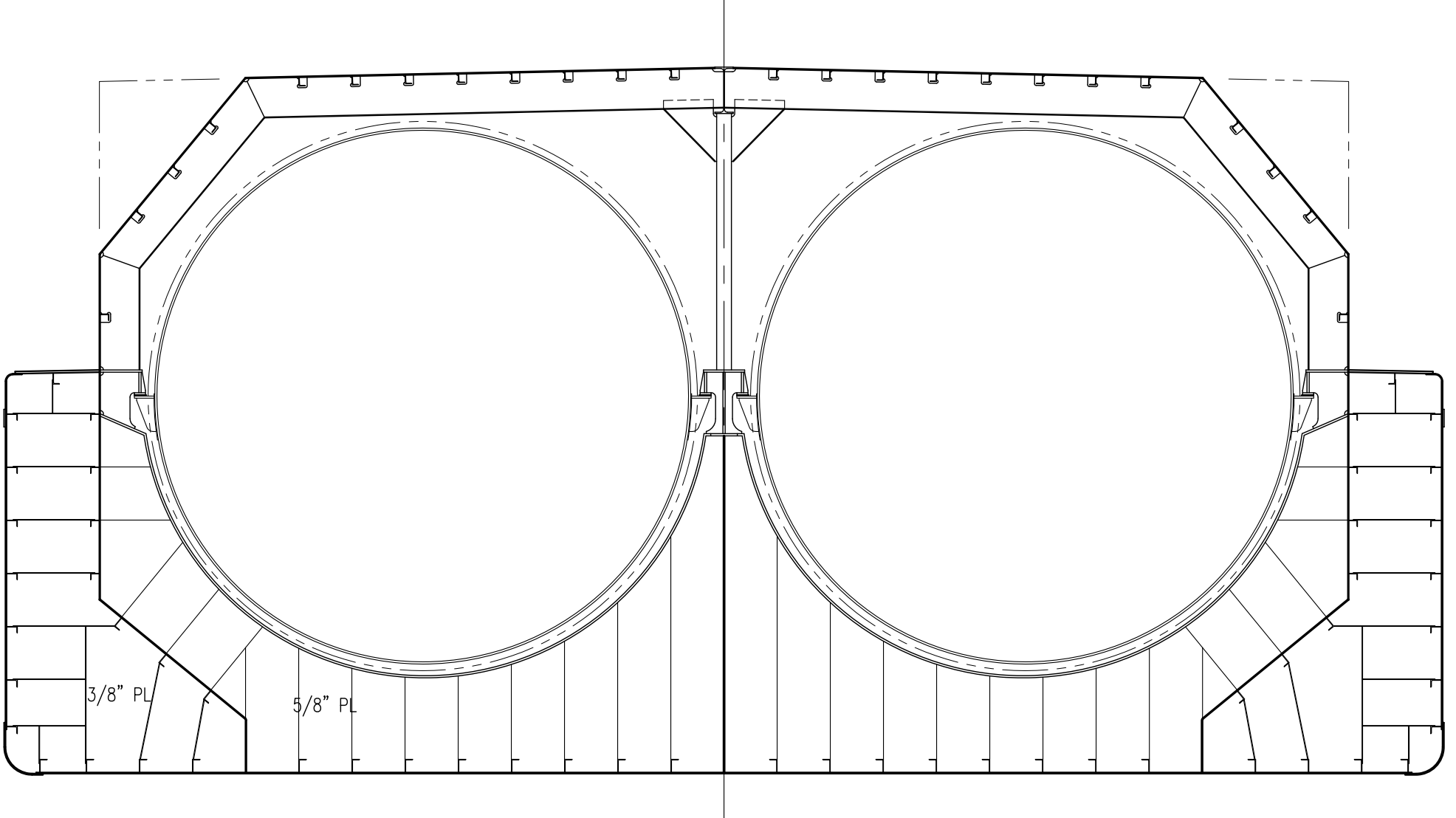


OUTBOARD PROFILE
3/32" = 1'-0"

PRELIMINARY



TYP. N.T. FRAME
3/16" = 1'-0"



TYP. W.T. SADDLE
3/16" = 1'-0"

PRINCIPAL DIMENSIONS

LENGTH OVERALL, MOLDED	299'-0"
BEAM, MOLDED	54'-0"
DEPTH, MOLDED AT SIDE	15'-0"
DEPTH OF MAIN DECK AT C/L	15'-6"
FULL LOAD DRAFT (APPX.)	10'-0"
DISPLACEMENT AT FULL LOAD (APPX.)	4,600 STFW
DEADWEIGHT (APPX.)	2,700 ST
CARGO TANK LENGTH	232'-0"
CARGO TANK DIAMETER	20'-0"

GENERAL NOTES

1. THE VESSEL SHALL BE A SUBCHAPTER "O", TYPE II HULL, CERTIFIED TO CARRY ANHYDROUS AMMONIA.
2. CARGO TANKS TO BE ASME CERTIFIED, DESIGNED FOR 50 PSI.
3. CARGO TANK SADDLES TO BE W.T. AT FRAMES 14, 24, 34.

REV	ZONE	DESCRIPTION	DATE	BY/CHK
REVISIONS				
GUARINO & COX, LLC 19399 HELENBURG RD, SUITE 203 COVINGTON LA, 70433				
THE USE OF THIS PLAN AND / OR DISCLOSURE OF ITS CONTENTS, IN ANY FASHION, IN WHOLE OR IN PART AND / OR ITS REPRODUCTION WITHOUT THE PREVIOUS WRITTEN PERMISSION OF GUARINO & COX, LLC IS STRICTLY PROHIBITED.				
APPROVALS				
ABS _____		OWNER _____		
USCG _____		OWNER _____		
DEVALL COMMERCIAL BARGE LINE, INC.				
299'-0" x 54' x 15' AMMONIA BARGE				
PROFILE AND GENERAL ARRANGEMENT				
DRAWN BY: RA	DATE: 4/1/11	DWG. NO. A-01		
CK'D BY:	HULL No.	SHT 1 OF 1		
SCALE: 3/32" = 1'-0"	G&C Job No. 10-048	REV. P		